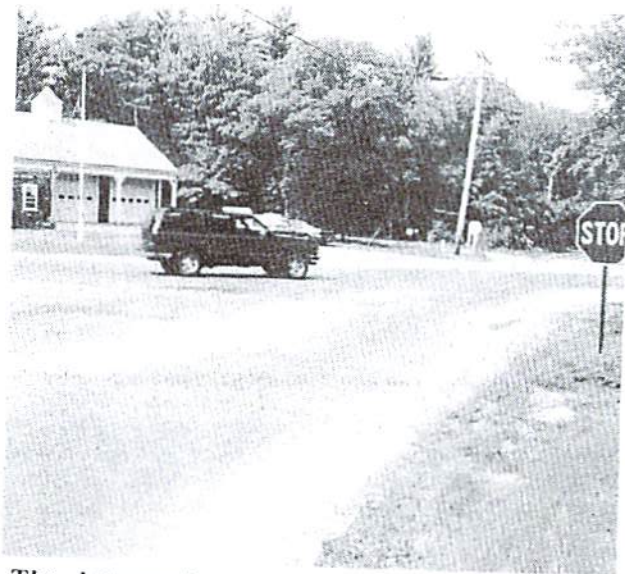


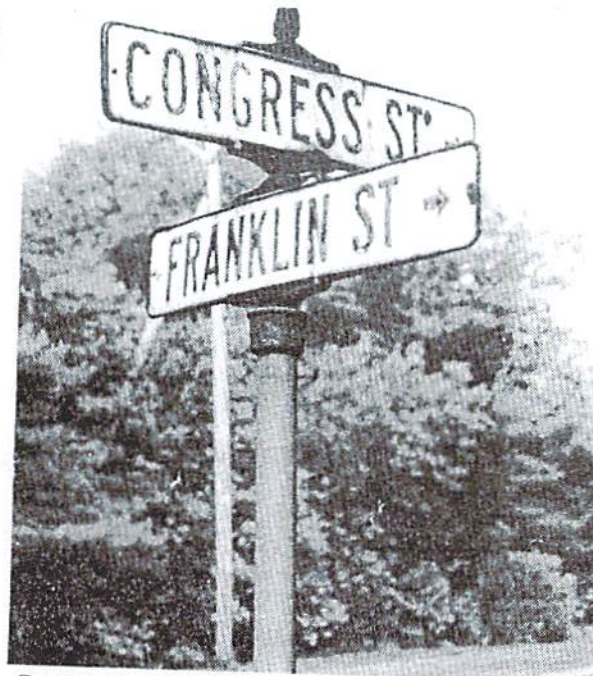
Streets and byways

Duxbury Clipper, Wednesday, July 24, 1996

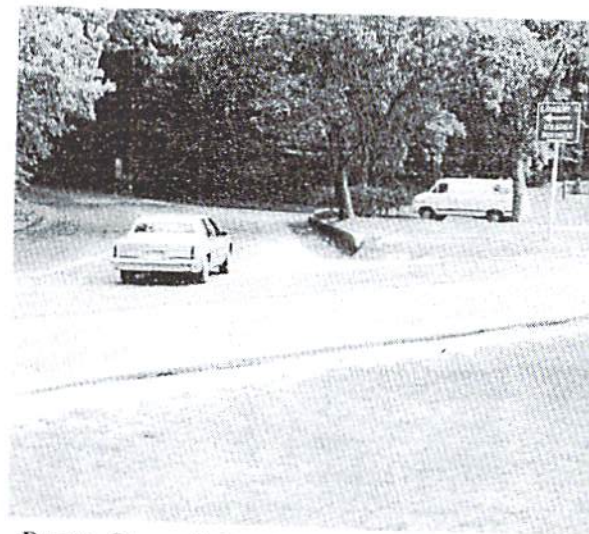
Duxbury's Most Dangerous Intersections



The intersection of Congress (Rte 14) and Franklin streets, in the Ashdod section, can be dangerous. Out-of-town drivers using Rte 14 (which goes to Brockton) to get to Duxbury Beach are often not aware of local traffic.

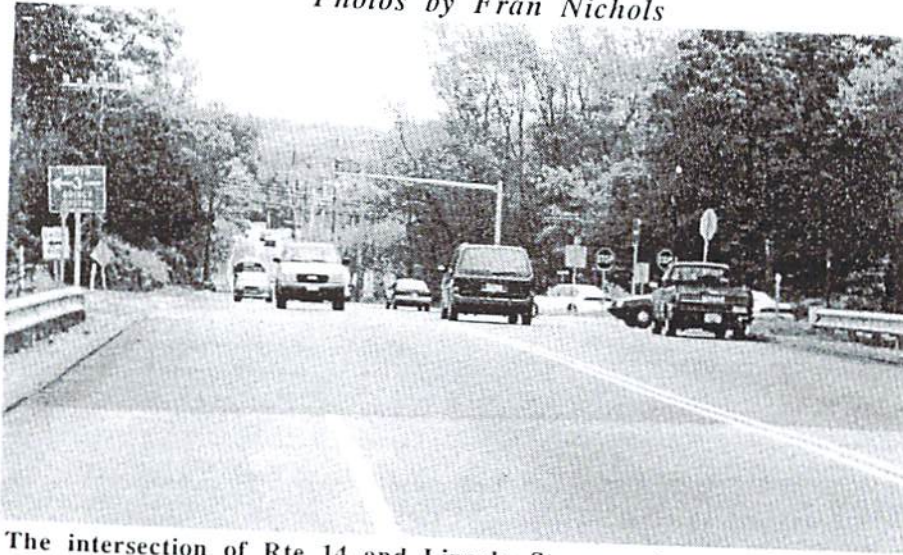


Caution motorists! Both Congress and Franklin streets meet at this corner to connect to Rtes 53 and 3.



Depot St. and 3A is one of several Duxbury intersections where the likelihood of a fender-bender (or worse) is fairly high. Turning left onto 3A from Depot is particularly hazardous because it's so difficult to see the oncoming traffic on 3A. The Town Hall and the First Parish Church entrances and exits can also complicate the situation.

Photos by Fran Nichols



The intersection of Rte 14 and Lincoln St. near the Rte 3, Exit 10 on and off ramps is not as simple as it looks. The incline makes it easy to misjudge speed. The number of entrance/exit options makes directional signals difficult to decipher.



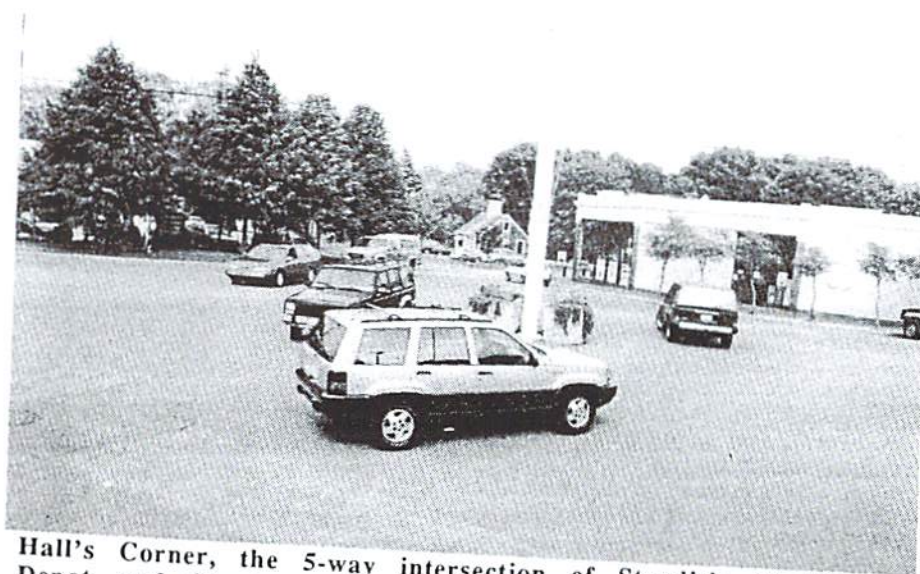
The intersection, known at Bailey's Corner, of Chestnut, Tremont (3A) and Tobey Garden streets can be treacherous even under the best conditions. Motorists traveling east on Tobey Garden St. are faced with difficulty in seeing oncoming traffic from the right due to the hill and the curve in Rte 3A.



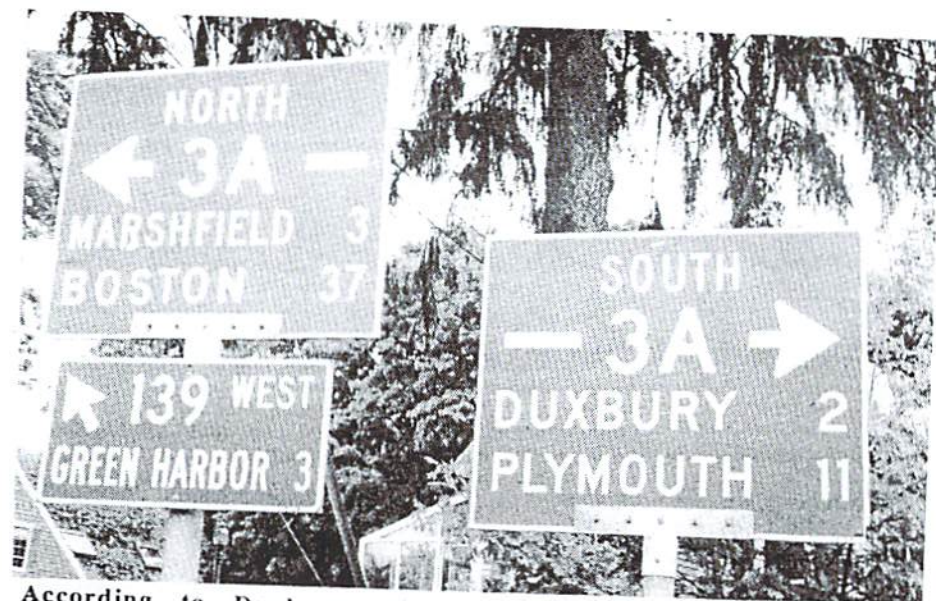
The heavily wooded and sharply angled intersection of Union Bridge and King Philip's Path calls for extreme caution on the part of motorists. Duxbury's rural charm and winding, hilly roads presents some real safety challenges for residents and visitors. Other tricky places are where Alden St. ends at Rte 3A near "deadman's curve" and where Surplus St. ends on Washington St.



Cox's Corner, where 3A crosses 139 has been the scene of many a mishap. Fifty percent of Duxbury's traffic accidents take place on main routes such as 139, 53, 3, 3A, and 14.



Hall's Corner, the 5-way intersection of Standish, Washington, Depot, and Chestnut streets and Bay Rd is almost always busy. Motorists must be alert to the fact that strangers to Duxbury frequently fail to notice the "Keep Right" rotary traffic signs. Visitors often cut across the roadways any whichway. This is particularly likely to happen during the summer vacation months!



According to Duxbury Police Lt. Donald Sjostedt, 50% of Duxbury's traffic accidents occur on the major thoroughfares—139, 53, 3A, 14, and 3.